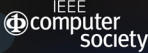


# VIS 2016

VAST • INFOVIS • SCIVIS

23-28 October 2016  
Baltimore, Maryland, USA



---

## Supporter/Exhibitor Prospectus

**VIS 2016**  
**[ieeevis.org](http://ieeevis.org)**

IEEE Visual Analytics Science & Technology Conference (VAST)  
IEEE Information Visualization Conference (InfoVis)  
IEEE Scientific Visualization Conference (SciVis)

Hilton Baltimore  
Baltimore, Maryland

Conference Dates  
23-28 October 2016

Exhibit Dates  
25-27 October 2016

IEEE VIS 2016 provides the premier forum for advances in scientific and information visualization in academia, science, government, and industry. Three events, the IEEE Conference for Visual Analytics for Science and Technology (VAST), the IEEE Information Visualization Conference (InfoVis), and the IEEE Scientific Visualization Conference (SciVis) will be jointly held at the Baltimore Hilton from Sunday, October 23 through Friday, October 28, 2016. These events bring together researchers and practitioners in the visualization field with a shared interest in tools, techniques, and technology. A full complement of research presentations, tutorials, symposiums, workshops, panels, demonstrations, posters, and exhibitions make this conference one of the largest and most important gatherings researchers and professionals who specialize in the visual analysis of data.

# Symposia & Workshops

## **IEEE Symposium on LargeScale Data Analysis and Visualization (LDAV)**

[ldav.org](http://ldav.org)

The IEEE Symposium on LargeScale Data Analysis and Visualization (LDAV) brings together domain scientists, data analytics and visualization researchers, High Performance Computing (HPC) specialists, and database technology providers, fostering innovative solutions to problems unique to extremely large scale data.

## **IEEE Symposium on Visualization for Cyber Security (VizSec)**

[www.vizsec.org](http://www.vizsec.org)

The IEEE Symposium on Visualization for Cyber Security (VizSec) brings together researchers and practitioners from academia, government, and industry to address the needs of the cybersecurity community to foster greater exchange and new collaborations on a broad range of security and privacy related topics.

## **IEEE Symposium on Biological Data Visualization (BioVis)**

[biovis.net](http://biovis.net)

The IEEE Symposium on Biological Data Visualization is intended to educate, inspire, and engage visualization researchers in problems in biological data visualization, as well as bio-informatics and biology researchers in stateoftheart visualization research and serves as a platform to increase the impact of biological data visualization.

## **Visualization in Data Science Workshop (VDS)**

[visualdatascience.org](http://visualdatascience.org)

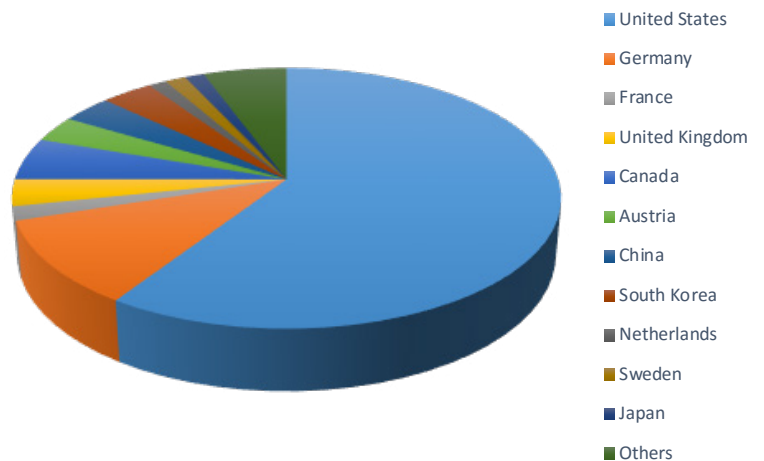
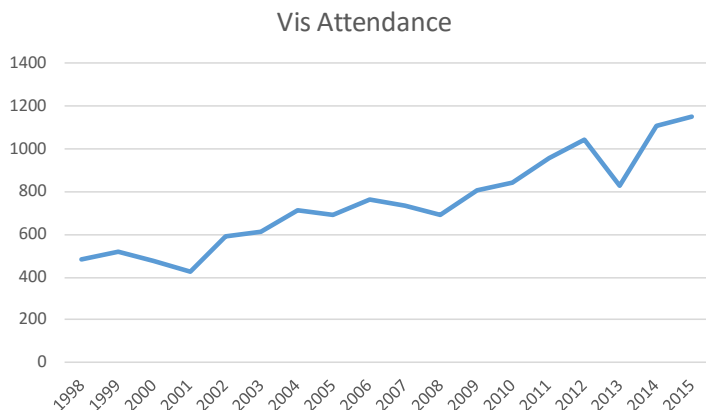
The Visualization in Data Science (VDS) Workshop brings together practitioners and researchers in data science and visualization to discuss practical issues and identify open research problems in the field of Data Science, the practice of deriving insight from data at the intersection of statistical methodology, computer science and a scientific domain.

We invite you to participate in the support of IEEE VIS 2016 by supporting and exhibiting at the conference. New for VIS 2016, conference participants will be given the opportunity to upload their CVs, schedules, and other details that will be shared among interested supporters recruiting for staff, postdocs, and/or summer interns. Gold supporters and above will receive detailed information about these conference participants. Diamond and Platinum supporters will have an interview room available to meet with conference participants.

### Why Support and Exhibit at IEEE VIS 2016

- Meet over 1,000 conference participants – potential customers and collaborators – leading researchers from government, industry, and academia from around the world that specialize in visual data representation and analysis.
- Gain first hand access to highly talented and skilled individuals for recruitment into your product development and research teams. Many of the conference participants are job seeking senior doctoral candidates and postdoctoral research fellows.
- Increase visibility among conference attendees with an exhibition. The 2016 exhibits will be held in the Key Ballroom in high traffic areas to maximize the interaction between exhibitors and attendees. An exhibit gives the opportunity to promote your company through print, presentation, media, and personal contact.
- In addition to weeklong exhibit space, platinum and diamond supporters and above will have a time slot to present their technologies and research in the official conference supporter track.
- Promote your company in the official conference materials. Your company name, logo, and website will be included in the conference proceedings, final program, and conference website.
- Receive complimentary or reduced conference registrations enabling your company to reach potential customers and recruit potential candidates.

### IEEE VIS 2015 CONFERENCE STATISTICS





Level of Support

# **DIAMOND**

## **\$15,000**

### **or greater**

- Four (4) complimentary fullweek registrations (includes reception and banquet tickets).
- Company name, logo, and URL will be listed as a Diamond supporter in all conference announcements, the advance program, and the conference website maintained at <http://ieevis.org>.
- Acknowledgement of your company's contribution and offer of thanks at the opening and closing sessions of the conference.
  - Complimentary exhibition space size of 3 exhibition units.
  - Enhanced signage throughout the conference directing attendees to your exhibit.
- Opportunity to be the named supporter of the evening awards banquet, which will be determined on a firstcome, firstserved basis.
  - A time slot to present company technology & research in the official supporter track.
- List of participants interested in new job opportunities plus candidates' schedule at VIS (e.g. talk or poster number) and copies of CVs.
  - Priority access to the interview room.
- Direct point-of-contact and coordination with the Supporter Chairs for your exhibit.

**Each exhibition unit includes:**

10 feet x 10 feet (3 meters x 3 meters) floor space  
One (1) table and two (2) chairs  
One (1) 500-Watt electrical outlet  
Wireless Internet access



Level of Support

# PLATINUM

## \$10,000

- Three (3) complimentary fullweek registrations (includes reception and banquet tickets).
- Company name, logo, and URL will be listed as a Platinum supporter in all conference announcements, the advance program, and the conference website maintained at <http://www.ieeevis.org>.
- Acknowledgement of your company's contribution and offer of thanks at the opening and closing sessions of the conference.
- Complimentary exhibition space size of 2 exhibition units.
- Opportunity to be the named supporter of a morning or afternoon break, which will be determined on a firstcome, firstserved basis.
- A time slot to present company technology & research in the official supporter track.
- List of participants interested in new job opportunities plus candidates' schedule at VIS (e.g. talk or poster number) and copies of CVs.
- Access to the interview room.
- Direct pointofcontact and coordination with the Supporter Chairs for your exhibit.

**Each exhibition unit includes:**

10 feet x 10 feet (3 meters x 3 meters) floor space  
One (1) table and two (2) chairs  
One (1) 500-Watt electrical outlet  
Wireless Internet access



Level of Support

# **GOLD**

## **\$6,000**

- Two (2) complimentary fullweek registrations (includes reception and banquet tickets).
- Company name, logo, and URL will be listed as a Gold supporter in all conference announcements, the advance program, and the conference website maintained at <http://www.ieeevis.org>.
- Acknowledgement of your company's contribution and offer of thanks at the opening and closing sessions of the conference.
- Complimentary exhibition space size of 2 exhibition units.
  - List of participants interested in new job opportunities plus candidates' schedule at VIS (e.g. talk or poster number) and copies of CVs.
- Direct point-of-contact and coordination with the Supporter Chairs for your exhibit.

**Each exhibition unit includes:**

10 feet x 10 feet (3 meters x 3 meters) floor space  
One (1) table and two (2) chairs  
One (1) 500-Watt electrical outlet  
Wireless Internet access



Level of Support

# SILVER

## \$3,000

- One (1) complimentary full-week registration (includes reception and banquet tickets).
- Company name, logo, and URL will be listed as a Silver supporter in all conference announcements, on the advance program, and the conference website maintained at <http://www.ieeevis.org>.
- Acknowledgement of your company's contribution and offer of thanks at the opening and closing sessions of the conference.
- Complimentary exhibition space size of 1 exhibition unit.
- List of participants interested in new job opportunities.
- Direct point-of-contact and coordination with the Exhibitors Chairs for your exhibit.

**Each exhibition unit includes:**

10 feet x 10 feet (3 meters x 3 meters) floor space

One (1) table and two (2) chairs

One (1) 500-Watt electrical outlet

Wireless Internet access



Level of Support

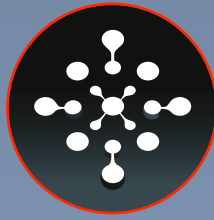
# BRONZE

## \$1,000

- Reduced full-week registrations  
(includes reception and banquet tickets).
- Company name, logo, and URL will be listed as a Bronze supporter in all conference announcements, the advance program, and the conference website maintained at <http://www.ieeevis.org>.
- Complimentary exhibition space size of 1 exhibition unit.
- Direct point-of-contact and coordination with the Exhibitors Co-Chairs for your exhibit.

**Each exhibition unit includes:**

10 feet x 10 feet (3 meters x 3 meters) floor space  
One (1) table and two (2) chairs  
One (1) 500-Watt electrical outlet  
Wireless Internet access



Level of Support

# **NON-PROFIT/ PUBLISHER/ ACADEMIC \$500**

- Reduced fullweek registrations  
(includes reception and banquet tickets).
- Name, logo, and URL will be listed as a supporter in all conference announcements, the advance program, and the conference website maintained at <http://www.ieeevis.org>.
- Complimentary exhibition space size of 1 exhibition unit.
  - Direct pointofcontact and coordination with the Supporter Chairs for your exhibit.

**Each exhibition unit includes:**

10 feet x 10 feet (3 meters x 3 meters) floor space  
One (1) table and two (2) chairs  
One (1) 500-Watt electrical outlet  
Wireless Internet access



Level of Support

## **VISKids**

### **\$500**

Attending a conference is crucial for earlycareer researchers to disseminate their work, network with others in the field, and build visibility. At the same time, many young researchers face the challenge of balancing a career and parenthood. The VIS conference believes that child care costs should not hinder participation. The VISKids program provides grants to VIS attendees to help offset child care costs incurred while attending the VIS conference. The grants are open to all VIS attendees with priority given to those at the earliest stages of their careers.

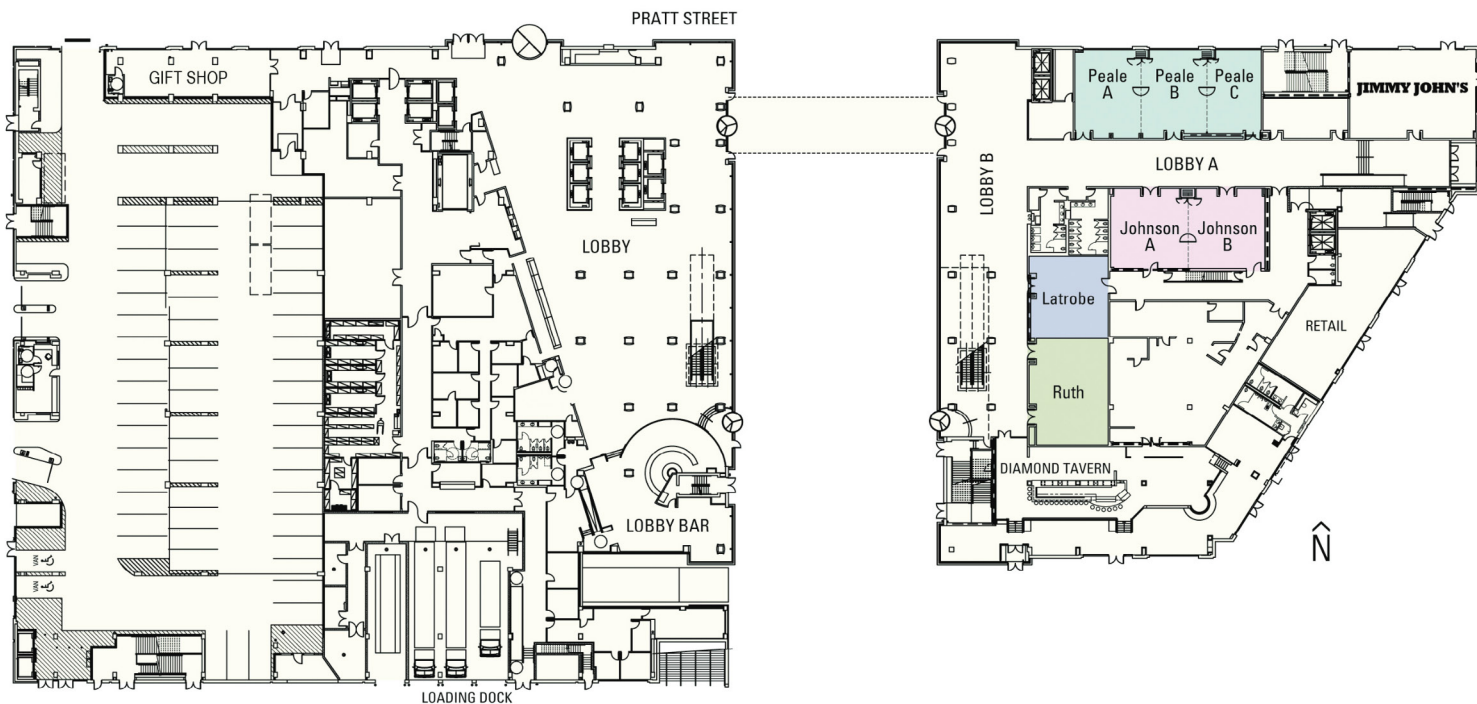
Supporting the VISKids program is a direct mechanism to help foster and grow the VIS community and can be done as an additional level of support. All supporters of VISKids will be listed on the VISKids website and receive a sponsorship banner for their exhibit booth.

## **VIS Pioneer Group**

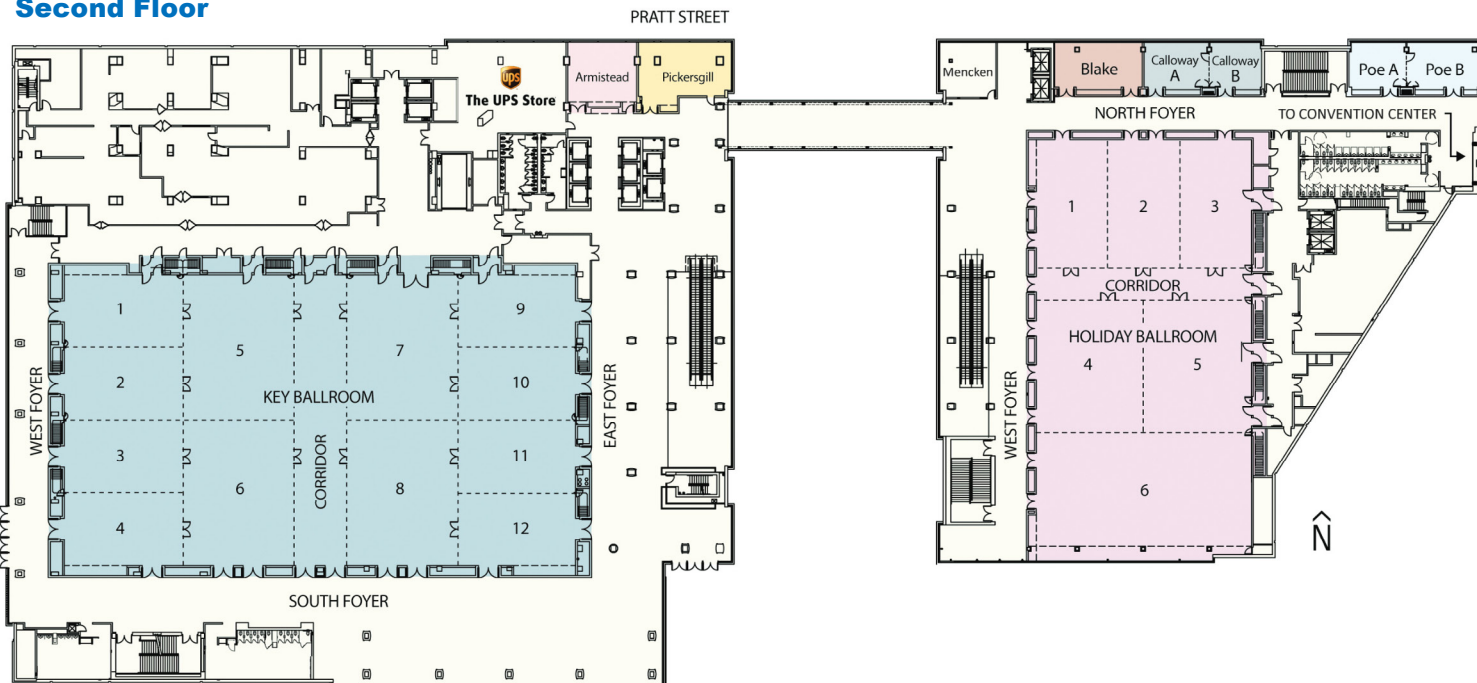
### **\$500**

The VIS Pioneer Group (VPG) is a networking, mentoring, advisory, and philanthropic organization that gathers each year at IEEE VIS for a reception and features a distinguished speaker. Visualization Pioneers are passionate advocates of all aspects of visualization and share ideas with the Visualization and Graphics Technical Committee (VGTC) to help shape the future direction of the VIS community. All supporters of VPG will be listed on the VPG website (<http://vgtc.org/content/ieeevgtcvisualization-pioneers-group>) and receive a sponsorship banner for their exhibit booth.

**First Floor**



**Second Floor**



**Conference will be held in the Key Ballroom and the Holiday Ballroom on the second floor**

For more information, visit:

[http://www3.hilton.com/resources/media/hi/BWICCHH/en\\_US/pdf/en\\_BWICCHH\\_Floor\\_Plan\\_Sep\\_2013.pdf](http://www3.hilton.com/resources/media/hi/BWICCHH/en_US/pdf/en_BWICCHH_Floor_Plan_Sep_2013.pdf)

## Conference Deadlines

### Friday, September 16, 2016

- Deadline for Supporter/Exhibitor Application and Full Payment
- Deadline for company logo to appear in printed materials (highquality vectorbased image file).
- Applications received after September 16, 2016 will be accepted subject to availability.

### Monday, October 10, 2016

- Exhibitor space assignments will be emailed.

### Thursday, October 20, 2016

- Earliest date that exhibit materials can arrive at the Baltimore Hilton.

## Contact Information

### IEEE VIS 2016 Supporters Contacts

#### Allen Sanderson

Supporters CoChair  
Scientific Computing and Imaging  
Institute  
[supporters@ieeevis.org](mailto:supporters@ieeevis.org)

#### Jörn Kohlhammer

Supporters CoChair  
Fraunhofer IGD, Germany  
[supporters@ieeevis.org](mailto:supporters@ieeevis.org)

#### Rahul Basole

Supporters CoChair  
Georgia Institute of Technology  
[supporters@ieeevis.org](mailto:supporters@ieeevis.org)

### IEEE VIS 2016 Conference Contacts

#### Terry Yoo

General Chair  
National Library of Medicine  
[vis2016gc@ieeevis.org](mailto:vis2016gc@ieeevis.org)

#### Jesus Caban

General Chair  
Walter Reed National Military Medical  
Center  
[vis2016gc@ieeevis.org](mailto:vis2016gc@ieeevis.org)

## Administrative and Logistical Support

#### Nicole Finn

Conference Planner  
Liaison for the IEEE Computer  
Society  
C to C Events  
[nicole@ctoevents.com](mailto:nicole@ctoevents.com)

### Purpose

The purpose of all exhibits is to inform meeting participants of the type and nature of products related to scientific, medical, and information visualization and to provide information and explanation concerning related products and services. Appropriate product demonstrations and visuals can be used towards the stated purpose.

### Space Assignments

The following rules and regulations governing the exhibit under the auspices of IEEE VIS 2016 are part of the application for space and constitute a contract between the Exhibitor and the Conference. They have been formulated in the best interest of the Exhibitor and full cooperation of the Exhibitor in their observance is asked. Any detail not specified is subject to decision by the Chairperson of the Conference. Each assignment of space also entails benefits from the conference. The actual nature of the benefits depends on the support purchased by the Exhibitor (see Levels of Support).

Space will be assigned when the exhibitor has registered and returns a duly completed application along with the payment. The Conference reserves the right to modify the designated exhibit space in the event a change in the original assignment is necessary. The Exhibitor agrees to accept the space assigned. Exhibit space will be assigned based on the date the application is received.

### Terms of Payment

Full payment MUST accompany the supporter/exhibitor online application. No application will be processed without remittance of full payment. Deadline for initial exhibit space assignments is 16 September 2016. A completed online application for space with full payment and all requested information must be submitted.

Submission instructions will be available through the Exhibit Chairs. Payment by credit card for amounts of \$1000 or less can be processed as part of the online application form. Visa, MasterCard, Discover and American Express are accepted.

If offline payment is required, you may select between check and wire transfer in the online payment system after completing your online application. Payment by wire transfer will subject to a \$25 processing fee. Instructions for check and wire transfers will be communicated when the online application is completed. Payment must be received by September 16, 2016.

### Contract for Space

The acceptance of the application by IEEE VIS 2016 and the full payment of conference support constitute a contract. A completed application for space with full payment and all requested information must be submitted by mail or facsimile. Also, a highresolution corporate logo is needed. Facsimile applications will be received but must be followed by payment by check. Telephone requests will not be honored. Depending on support purchased, exhibitors will be provided one to four exhibition units. An exhibition unit is considered to be 10 feet by 10 feet (3 meters by 3 meters). Other configurations are possible. Contact the Supporter Chairs for special needs. For each exhibition unit, the Conference will furnish a table and two chairs. Exhibitors will be provided normal access to electrical power (subject to availability), and the wireless internet as available at the hotel. In essence, all ordinary PCs and workstations can be supported with available internet connectivity. The exhibitors should make their own arrangements with the hotel staff for needs and requirements that exceed the minimum.

### Cancellations

Exhibitors are requested to notify IEEE Conference Management with cancellations. Cancellations are not effective until they have been submitted in writing to the Supporter Chairs. Space reductions are considered cancellations. It is understood that IEEE VIS 2016 reserves the right, at its option, to reassign a cancelled space.

### Refunds

Promotion of the conference and its supporters is ongoing. Therefore, Conference Support is not refundable.

### Sharing Space

Subletting of space is not permitted.

### Badges and Staffing

A confirmation email will be sent once the submitted support/exhibit application is processed. Names of appropriate staff at the exhibit can be added as needed. Each exhibiting company is limited to five (5) complimentary exhibitonly badges (includes coffee breaks). Exhibit staff wishing to attend the conference technical program, reception(s), and/or the banquet must register for the conference at the reduced earlybird registration fee or purchase reception and/or banquet tickets. Exhibits should be staffed during show hours. Badge exchange between exhibitor representatives is not permissible.

### Operation of Exhibits

Show management reserves the right to restrict exhibits that, because of sound, method of operation, materials, content, or any other reason are deemed objectionable, and also to prohibit or evict any exhibit as a whole.

### Size of Exhibits

Exhibits must be arranged so as not to obstruct the view or otherwise

interfere with the displays of other Exhibitors. This restriction includes person(s), things, conduct, printed material, noise, or anything that may be objectionable to the exhibit as a whole. In the event of such restriction or eviction, neither IEEE VIS nor the IEEE Computer Society is liable for any refunds, rentals or other exhibit expenses.

### Shipping Items to the Conference

All packages and freight deliveries to the Baltimore Hilton are managed through The UPS Store, acts as the business center and package service department for the property. To ensure proper processing, please address all materials intended for guests as follows:

#### SHIPPING ADDRESS:

Name (of person who will be onsite)  
Company Name  
C/O Hilton Baltimore  
401 West Pratt Street  
Baltimore, MD 21201  
Attn: UPS/Package Room  
Hold for Guest Arrival  
Delivery Date & Destination

#### Shipping, Receiving & Storage Processing Fees: Package Handling Inbound and Outbound

Security fee per day, per item after first 3 days plus (+)  
handling fee 5.00  
Letter over 1 oz. 3.00  
110 lbs. 5.00  
1130 lbs. 10.00

3150 lbs.	20.00
5175 lbs.	40.00
76100 lbs.	60.00
101+ lbs.	100.00
Pallets	250.00

\*The UPS Store handles all inbound and outbound packages for groups and individuals. Please call us or stop by to pickup or dropoff your packages and items.

- Official convention movement of packages will be posted to (SRP) Participants and exhibitors requesting package delivery will be responsible for their own charges.
- Please be advised the Hotel Package Room will not accept or store crates.
- The Package Room Management reserves the right to NOT accept boxes which are damaged during shipping, unsafe, or too large.
- Parcels are accepted 3 days prior to arrival.
- Number each box and know its contents. This helps when a specific box needs to be located immediately (i.e. 1 of 2; 2 of 2)

#### Violations

As a condition for exhibiting, each Exhibitor shall agree to observe all policies. Violators will not be eligible to exhibit at future IEEE VIS Conference meetings.

#### Insurance

Advise your agent! Insurance on all exhibits is the responsibility of the Exhibitor. The IEEE Computer Soci-

ety will not assume any responsibility for property loss or damage to personal property, as stated in the section on Limitation of Liability. Exhibitors are advised and encouraged to carry insurance to cover their property against damage and loss and public liability insurance for claims of injury to the person and property of others.

#### Limitation of Liability

Exhibitor agrees with IEEE that IEEE shall not be liable for any damage or liability of any kind or for any damage or injury to persons or property during the term of this agreement, from any cause whatsoever by reason of use, occupation and enjoyment of exhibit space by Exhibitor or any person thereon with the consent of Exhibitor and that Exhibitor will indemnify and hold harmless IEEE from all liability whatsoever, on account of such damage, or injury, whether or not caused by negligence of or breach of an obligation by Exhibitor or its employees or representative.

#### Catastrophe

In the event of fire, strikes, or other unavoidable occurrence rendering the exhibit space unfit for use, provisions will be made for the exhibit elsewhere or a proper financial adjustment will be made to the exhibitor.

# VIS 2016

VAST • INFOVIS • SCIVIS

23-28 October 2016  
Baltimore, Maryland, USA

